

SkinMale®

Owner's Guide SM-202 & SM-303

Package Contents:

- 1 – Steamer Unit
- 1 – Glass Container
- 1 – Stand with rollers (Unassembled)
- 1 – Silicone Rubber O-ring



Assembly Instructions:



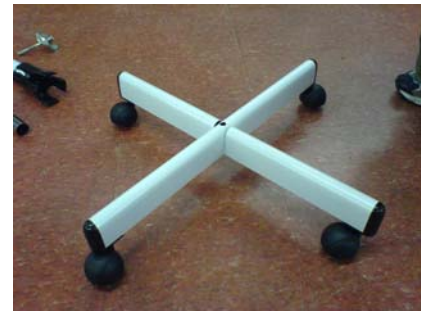
Separate the parts for the stand



Use a 14mm wrench to remove bolt under the center post.



Flip the large washer over



Put the leg portion of the stand together.



Press the center post of the stand onto the crossed legs. Note, if you have difficulty with the bolt not reaching the nut fixed inside of the stand: hold the center post and tap the black portion that fits over the legs on the ground a few times firmly to make it fit more tightly on the white center post.



Insert the bolt and tighten firmly using a 14mm wrench. The large metal washer should cup the legs to hold them in place. If the washer is sticking out, flip it over so that it supports the legs when fastened.



Take the chrome center post and determine the end that fits over the post on the bottom of the steamer. The post on the bottom of the steamer will only fit one end of the chrome post that fits into the stand.



Make sure the knob on the center post is loose and not screwed in past the black ring at the top of the stand. Insert the end of the chrome post that does not fit over the post on the bottom of the steamer. The white post has a spring inside, so use caution that the chrome post does not spring towards the face. **** CAUTION: Never put your face directly over the post or steamer to adjust the height. The spring mechanism that pushes the post up may force the post to spring into your face causing serious injury. Always make sure to have your face away from the post and hold the post or steamer with the other hand when loosening the knob or securing ring on the stand.**

1. To adjust the height, simply loosen the securing knob or locking ring and a spring will assist in raising the steamer height. **** CAUTION: Never put your face directly over the post or steamer to adjust the height. The spring mechanism may force the post into the face possibly causing serious injury.****



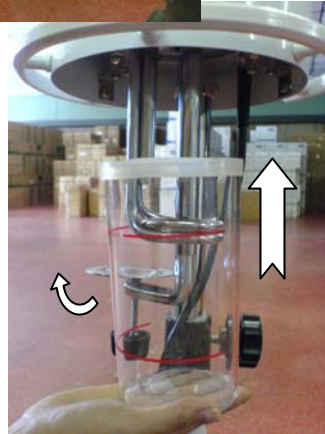
Do not twist the spray nozzle around. It will only turn about 45° in each direction.





Place the silicone o-ring on to the glass jar.

With the silicone ring on the jar, swing the bracket that holds the jar back and carefully place the glass jar into the metal ring on the bottom of the steamer, swing the bracket down and firmly tighten the black knob to hold the glass jar firmly in place. Use caution and do not over tighten the glass jar or it will break.



1. Power for heating element.
2. Power for ozone lamp.
3. Water Fill pipe.

Operating Instructions:

1. Before plugging the steamer into the outlet, make sure that the power switches are in the "Off" position.
2. Place the rubber o-ring on the glass container so that the channel of the o-ring fits over the glass.
3. Place the glass container up into the round area on the bottom of the steamer and swing the arm over and tighten the knob on the arm to hold the glass container in place.
4. Using the plastic cup, pour DISTILLED into the funnel shaped hole at the top of the steamer until the glass container is filled to the red line near the top of the container. **** CAUTION: Filling the container above the maximum level line on the glass jar can result in boiling water being forced through the spray nozzle. Never handle the glass container when the steamer is in use or has been used recently. The glass may be hot and could cause serious burns.** (Use of non-distilled water will cause minerals to buildup on or discolor the heating element of the steamer and thereby decrease the amount of hours the element will work.)
5. **Only once the glass container has been filled to the proper level should the steamer be plugged into the outlet and the power switch turned "ON".**
6. After steam begins to be emitted through the spray nozzle, you may choose to turn "ON" the Ozone lamp.
7. When the glass water container runs low on water, the thermostat will shut "off" the element automatically. However, the machine must be switched to the "Off" position to prevent burning out the element once the element cools and the thermostat turns the element "on" again.

Operating this steamer unit without water in the glass container will cause the heating element to overheat and break ruining both the element and the thermostat. Over heating such as mentioned can cause damage to the internal parts of the steamer and create costly repairs.

Caution: To avoid risk of shock do not drop or immerse unit into water as this can cause the machine to short, damaging the machine and causing possible serious injury to the person(s) in contact with the machine. Keep this machine out of reach of children or where they cannot gain access.

Use only qualified replacement parts:

Electrical Cord – E199409 SJT 18/3C 105° VW-1

On/Off Switches – DEFOND Part No. DRH-1215 – DEFOND T125 - JR CSA Approved 125A, 125VAC, 16(6) 250V~